



Hatfield
CONSULTANTS

Environmental Specialists Since 1974

GEOGRAPHIC INFORMATION SYSTEMS & MAPPING

Hatfield provides strategic advice, state-of-the-art spatial analysis and mapping services, and deep knowledge of environmental and socio-economic data

GIS AND MAPPING TECHNOLOGIES

Mobile data collection

Web-mapping

Cartography, atlases, and interactive maps, e.g. River Awareness Kits and Esri Story Maps

GIS DATA ANALYSIS AND MANAGEMENT

Linear alignments

Environmental assessment

Watershed analysis

Riparian assessment and wetlands

Wildlife and biodiversity assessment

Regional planning and strategic environmental studies

GIS REQUIREMENTS ASSESSMENT, DESIGN, AND STRATEGY

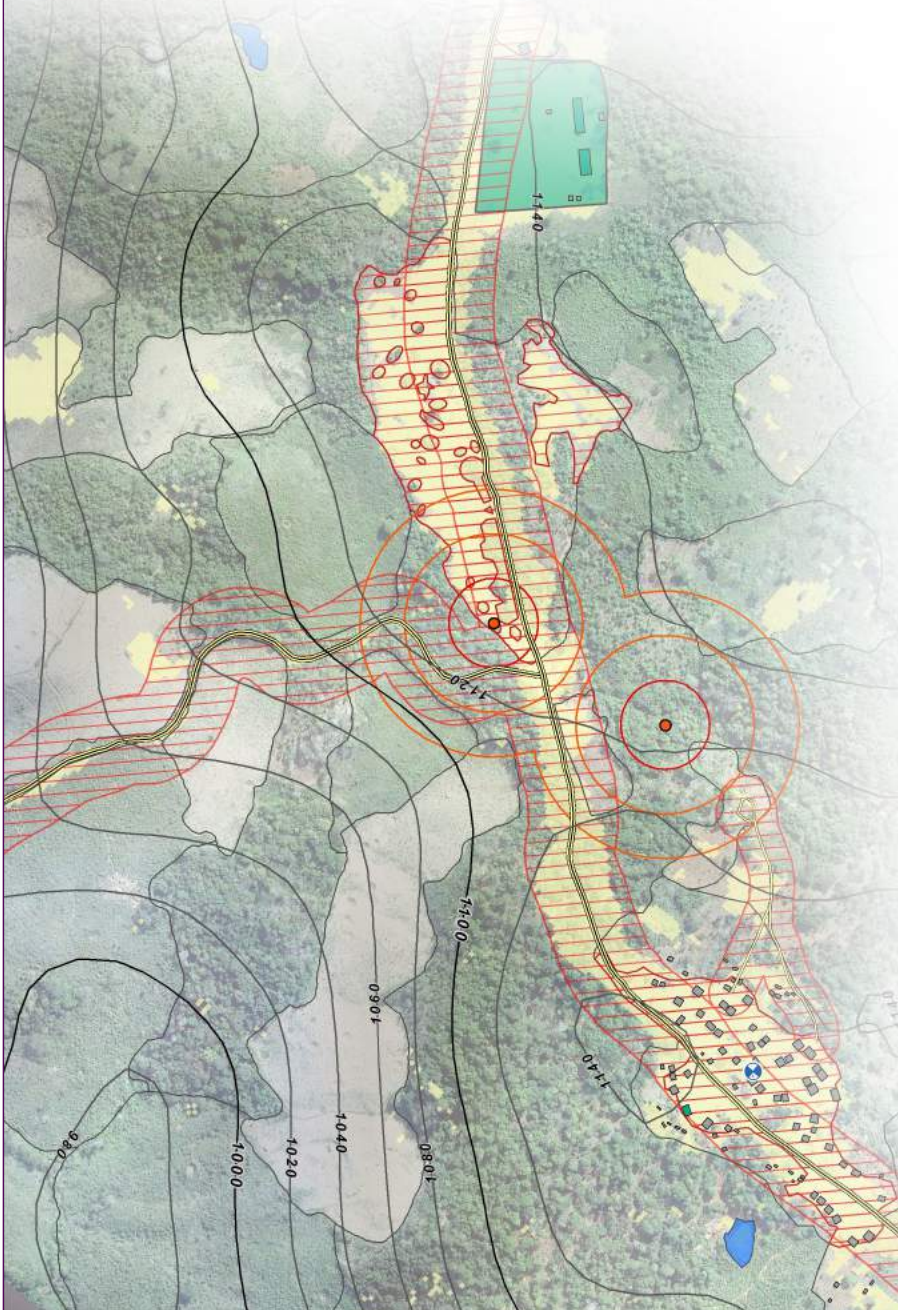
User needs assessment

Business process analysis

Implementing spatial technologies

Capacity building

WWW.HATFIELDGROUP.COM



Hatfield Consultants provides state-of-the-art mapping and spatial analysis services that add value to your environmental data. We advise government, private sector, and non-government clients on the geographic information systems technology for environmental monitoring and management around the world.

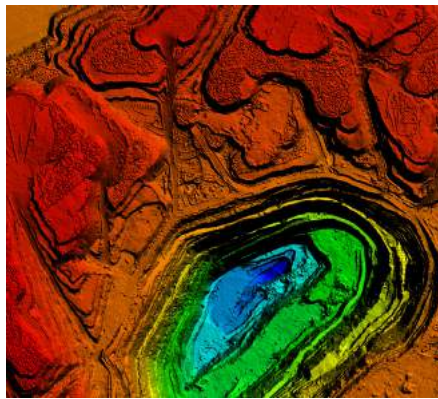
With expertise in remote sensing, GIS, and data management, our specialists develop datasets and analyses that allow you to observe and understand key environmental features of your project. From the Arctic to the tropics, we gather and analyze geospatial and satellite Earth observation data to extract levels of information to highlight patterns and relationships useful for your project, such as terrain, land cover, the built environment, water resources, and sensitive habitats.

FEATURED PROJECTS



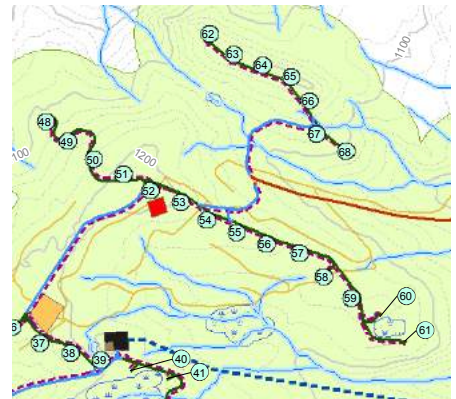
USER NEEDS ASSESSMENT FOR THE CANADIAN GEOSPATIAL DATA INFRASTRUCTURE (CGDI)

National-level research and needs assessment with stakeholders from all levels of government, academia, industry, and civil society, with a focus on understanding the needs of Indigenous communities. Key findings and recommendations support further development of the CGDI, including awareness raising, capacity building, policy, and systems.



GIS DATA FOR VOLUMETRIC ANALYSIS AT THE WORLD'S MOST VALUABLE DIAMOND MINE

Developed geospatial layers and completed volumetric analysis for Debswana Jwaneng Mine, Botswana. A digital surface model was created from multi-shot Worldview-3 satellite images using Terrabotics sub-pixel stereo correlation terrain analysis algorithm. The outputs included a 50 cm grid surface model, 30 cm ortho-image, contours, and volumetric analysis. The data were delivered within 72-hours of image acquisition at a much lower cost than airborne LiDAR.



MAPPING AND SPATIAL ANALYSIS FOR MEIKLE WIND ENERGY PROJECT

As lead for the environmental assessment of the Meikle Wind Energy project, a 180 MW project with 61 wind turbines located in the Peace Region of British Columbia, Hatfield coordinated geospatial data capture, management, analysis, and provided expert GIS support for all disciplines. Mapping and analysis covered vegetation, wildlife, land use, heritage, visual quality, cumulative effects assessment, and Aboriginal consultation.

WWW.HATFIELDGROUP.COM

WHY HATFIELD CONSULTANTS?

Hatfield is experienced in applying GIS technology to support environmental assessment, management, and monitoring across a range of disciplines, including water resources management, aquatic biology, wildlife, and social and environmental research. We work with open source and commercial tools to provide solutions compatible with our clients' needs.

Hatfield's continually innovates to improve our GIS services for clients in existing and new sectors. Innovation is fostered through the creation of collaborative, multi-disciplinary teams that include Hatfield staff and external subject matter experts.

We help you apply best environmental practices and contribute to a sustainable future.



Hatfield
CONSULTANTS