

# HATFIELD CONSULTANTS

# AFRICA

Hatfield is a pioneer in the field of environmental services, with a 40-year history of delivering successful projects to clients around the world. Hatfield has extensive experience working with hydropower, mining and other natural resource development companies, government agencies and the international donor community. We have implemented international development projects in over 40 countries.

## WE PROVIDE A COMPREHENSIVE RANGE OF ENVIRONMENTAL SERVICES TO INTERNATIONAL CLIENTS, INCLUDING:

### ENVIRONMENTAL SERVICES FOR THE NATURAL RESOURCE SECTOR

- Environmental Monitoring
- Environmental and Social Impact Assessments (ESIA)
- Baseline Inventories and Surveys
- Contaminant Assessment, Monitoring and Remediation, including Persistent Organic Pollutants (POPs)

### GEOSPATIAL SERVICES

- Satellite Image Sales and Processing
- Geographic Information Systems (GIS)
- Spatial Analysis
- Cartography
- Web-Based Mapping

### ICT SERVICES

- Customized Information Systems
- Data Analysis
- Corporate and Institutional Websites
- Content and Document Management
- Data-Driven Websites
- Web-Applications Development
- Google Maps and Google Earth Services

### FACILITATION AND ENGAGEMENT SERVICES

- Stakeholder Engagement and Facilitation
- Training
- Capacity Development



# HATFIELD CONSULTANTS AFRICA

## FEATURED PROJECTS



### KNOWLEDGE MANAGEMENT

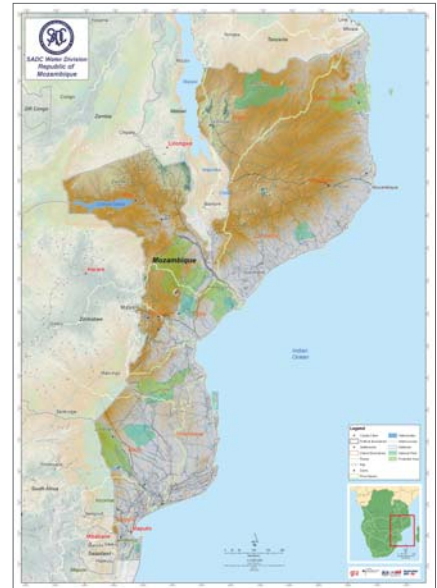
Hatfield has implemented websites and knowledge management systems for SADC, river basin organisations and the donor community. Developed through participatory processes, River Awareness Kits (RAKs) have been implemented for the Orange-Senqu, Limpopo, Kunene and Nile Rivers over the past 5 years. RAKs are knowledge management hubs for river basin organisations, intended to support capacity building and communication with a range of stakeholder groups through centralized access to standard and agreed information.

[WWW.SADCWATERACCOUNTING.ORG](http://WWW.SADCWATERACCOUNTING.ORG)  
[WWW.ICP-CONFLUENCE-SADC.ORG](http://WWW.ICP-CONFLUENCE-SADC.ORG)  
[WWW.LIMCOM.ORG](http://WWW.LIMCOM.ORG)  
[WWW.ORASECOM.ORG](http://WWW.ORASECOM.ORG)  
[WWW.RIVERAWARENESSKIT.COM](http://WWW.RIVERAWARENESSKIT.COM)



### ENVIRONMENTAL ASSESSMENT AND MONITORING

Hatfield has conducted environmental assessments and monitoring programs in the hydropower, mining, and oil and gas sectors for project proponents and regulatory agencies. Hatfield has conducted EIAs of mining operations and environmental assessment and monitoring of protected areas, including the application of GIS and satellite imagery. Hatfield has conducted stakeholder engagement and training in 14 Africa countries and is currently engaged with community-based natural resource management projects in Southern Africa.



### REMOTE SENSING AND GIS

Hatfield completed a river basin mapping project to develop a consistent set of river basin and country maps for the SADC Water Division. Hatfield has also used earth observation data to assist the Namibian Ministry of Agricultural, Water, and Rural Development monitor annual flooding of the Zambezi and Chobe rivers in the Caprivi region using Earth Observation data. As an official reseller for GeoEye High Resolution satellite imagery, Hatfield supports a range of environmental and planning applications.

[WWW.HATFIELDGROUP.COM/AFRICA](http://WWW.HATFIELDGROUP.COM/AFRICA)



*Hatfield Consultants Africa is part of the Hatfield Group of Companies – providing environmental services around the world for over 40 years.*

### HATFIELD CONSULTANTS AFRICA

Unit 7 Carramba Office Park, Phakalane, Gaborone, Botswana  
 Tel: +267 397 2661 Fax: +267 397 2668 [hca@hatfieldgroup.com](mailto:hca@hatfieldgroup.com)

