



Hatfield
CONSULTANTS

Environmental Specialists Since 1974

GEOMATICS

Hatfield helps you apply appropriate remote sensing and GIS technology for monitoring and managing the environment

WE PROVIDE STATE-OF-THE-ART REMOTE SENSING AND GEOGRAPHIC INFORMATION SYSTEM PRODUCTS AND SERVICES TO OUR CLIENTS, INCLUDING:

Image sales

Satellite image processing

GIS and CAD data conversion and integration

Map production and cartography

GIS user needs analysis

GIS design and implementation

GIS and remote sensing training

Internet map services

ENVIRONMENTAL APPLICATIONS

Flood mapping and monitoring

Wetland mapping

Land cover and change mapping

Hydrological spatial analysis

Forest cover change detection

Contaminant distribution mapping

Environmental effects monitoring

WWW.HATFIELDGROUP.COM

We use the latest geographic information, remote-sensing, and web-development technologies to implement innovative, appropriate, and user-driven solutions and products for environmental applications around the world. Our geographic information system (GIS) and remote-sensing (RS) products and services complement our traditional environmental assessment and monitoring services.

OFFICIAL SATELLITE IMAGE RESELLERS

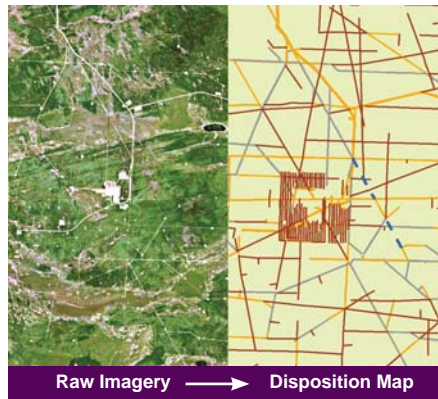
Hatfield is an official distributor of GeoEye products, including GeoEye-1 and Ikonos images and elevation models. We are also a distributor of RapidEye images, which are a cost-effective option for mapping large areas. We also supply products from SPOT, Quickbird, and WorldView-1 & -2. Our Indonesian office is an official distributor of TerraSAR-X products which includes elevation models. We have experience with many other sources of images, and new satellites are being launched every year. Let us help you select the right images for your application.

FEATURED PROJECTS



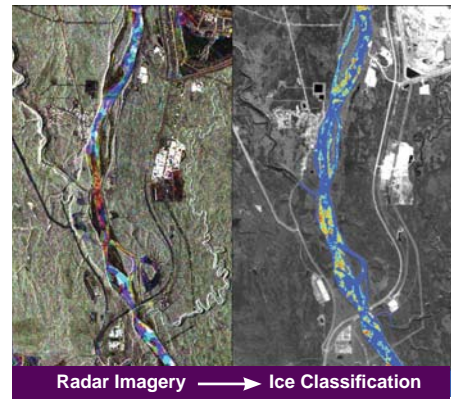
DATA MANAGEMENT, GIS AND MAPPING FOR MINE DEVELOPMENT

Hatfield manages all geo-spatial data and provides GIS analysis and mapping support to Minerals and Metals Group (MMG) for the Proposed Izok Corridor Project in Nunavut, Canada, currently in the planning stage. Hatfield also supports sub-consultants on this project in a range of the disciplines working towards the development of the Draft Environmental Impact Statement for this project. Hatfield developed quality control processes and standards for mapping, and geo-processing routines. Additionally, Hatfield is providing geomatics consulting services to MMG to maximize the benefit of existing and newly acquired data.



MAPPING OIL SANDS LAND USE

Hatfield provides RapidEye image acquisition and analysis services for the extraction of oil sands land use features, such as seismic survey lines. RapidEye images provide suitable spatial resolution, multi-spectral data and are very cost effective to provide imagery for large areas. Hatfield developed sophisticated object oriented feature extraction rule sets to extract relevant ground features. Our clients can use the features and attributes for applications such as wildlife migration modeling.



ICE CLASSIFICATION AND INSTREAM FLOW NEEDS IN THE ALBERTA OIL SANDS

Hatfield has developed river ice classification tools for the Athabasca River and several tributaries in the Alberta Oil Sands, which aim to support studies of in-stream flow needs (IFN). Analysis of radar satellite images produces statistics to classify ice types and identifies the grounded ice in these aquatic environments – understanding of grounded ice is important in relation of fish over-wintering habitat during the low flow period. Partners include CEMA, DFO and Parks Canada with support from the Canadian Space Agency (CSA).

WWW.HATFIELDGROUP.COM



Hatfield
CONSULTANTS

WHY HATFIELD CONSULTANTS?

Established in 1974 and based in Vancouver, Canada, Hatfield Consultants has built a worldwide reputation in environmental services with over 3,500 projects in Canada, Asia, Africa, South America and Europe. With company offices in Canada, Indonesia, Laos and Botswana, as well as business partners in Chile and Thailand, we are well positioned to respond to your individual project needs and requirements – wherever you are.

We help you apply best environmental practices and contribute to a sustainable future.