



Hatfield
CONSULTANTS

Environmental Specialist Since 1974

GEOMATICS

Hatfield helps you apply appropriate remote sensing and GIS technology for monitoring and managing the environment

**WE PROVIDE STATE-OF-THE-ART
REMOTE SENSING AND GEOGRAPHIC
INFORMATION SYSTEM PRODUCTS
AND SERVICES TO OUR CLIENTS,
INCLUDING:**

Image sales

Satellite image processing

GIS and CAD data conversion and
integration

Map production and cartography

GIS user needs analysis

GIS design and implementation

GIS and remote sensing training

Internet map services

ENVIRONMENTAL APPLICATIONS

Flood mapping and monitoring

Wetland mapping

Land cover and change mapping

Hydrological spatial analysis

Forest cover change detection

Contaminant distribution mapping

Environmental effects monitoring

WWW.HATFIELDGROUP.COM

We use the latest geographic information, remote-sensing, and web-development technologies to implement innovative, appropriate, and user-driven solutions and products for environmental applications around the world. Our geographic information system (GIS) and remote-sensing (RS) products and services complement our traditional environmental assessment and monitoring services.

OFFICIAL SATELLITE IMAGE RESELLERS

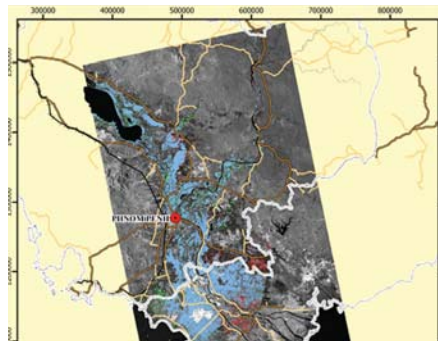
Hatfield is an official reseller of GeoEye products and services in Canada and Indonesia, including GeoEye-1, Ikonos and SPOT satellite data and AJ Harden aerial photography. In Indonesia, we are also an official reseller of TerraSAR-X Services, RapidEye, Kompsat and Formosat. We have access to, and experience with, Landsat, ENVISAT, ERS, Quickbird/WorldView, and ALOS PALSAR. In addition to existing archives of these numerous sensors, new satellites are being launched every year. Let us help you select the right imagery for you application.

FEATURED PROJECTS



AGRICULTURAL CARBON-STOCK VALIDATION USING SATELLITE IMAGERY

Hatfield works with GeoEye Inc. and in partnership with PriceWaterhouseCoopers LLP in the use of satellite imagery for the study of conservation tillage practice in the province of Alberta. High-resolution satellite and Landsat-5 & Landsat-7 images are used to assess and validate no-till farming and land area claims as part of the verification process for provincially regulated carbon credits.



FLOOD MAPPING AND VULNERABILITY IN THE MEKONG RIVER BASIN

Hatfield has developed an operational flood-mapping service for the Mekong River using satellite imagery that provides the Mekong River Commission with mapping products in near real time. The system is further enhanced with the integration of socio-economic and environmental information. These combined technologies provide visual and analytical information to assess the vulnerability of communities and reduce the risk of adverse effects from flooding.



EARTH OBSERVATION SERVICES FOR FOREST CARBON EMISSIONS PROJECTS

Earth observation products and services can support and enhance land use and forest carbon projects that are being developed in the voluntary carbon emissions market. Hatfield is implementing a project funded by the European Space Agency called Earth Observation Services for Forest Carbon Emissions Projects (EO-FORCE). EO-FORCE involves the design of integrated remote-sensing and forestry products and services for land use and forest carbon projects and the implementation and evaluation of trial services for projects in Indonesia.

WWW.HATFIELDGROUP.COM



Hatfield
CONSULTANTS

WHY HATFIELD CONSULTANTS?

Established in 1974 and based in Vancouver, Canada, Hatfield Consultants has built a worldwide reputation in environmental services with over 1,600 projects in Canada, Asia, Africa, South America and Europe. With company offices in Canada, Indonesia, Laos and Botswana, as well as business partners in Chile and Thailand, we are well positioned to respond to your individual project needs and requirements – wherever you are.

We help you apply best environmental practices and contribute to a sustainable future.