



Hatfield
CONSULTANTS

Environmental Specialist Since 1974

WILDLIFE

ASSESSMENT *Hatfield helps you survey, assess, monitor and manage wildlife*

WE PROVIDE WILDLIFE MONITORING, MANAGEMENT AND HABITAT ASSESSMENT SERVICES, INCLUDING:

Ground and aerial radio telemetry

Wildlife capture and handling

Winter snow track counts

Waterfowl and migratory bird inventories

Nest surveys and searches

Bird Deterrent Systems

Wildlife habitat suitability analysis

Browse and pellet transect surveys

WE ALSO PROVIDE RELATED GEOMATIC SERVICES THAT INCLUDE:

High-resolution satellite imagery

Satellite-based vegetation maps and habitat assessment

Habitat fragmentation analysis

Spatial analysis and spatial statistics

Cartography and data visualization



WWW.HATFIELDGROUP.COM

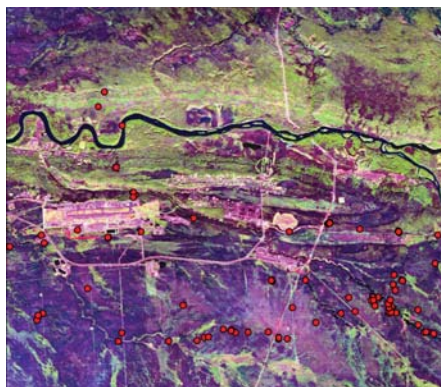
Hatfield Consultants has a reputation for ensuring that resource development is conducted in a manner that minimizes impacts to wildlife and complies with all relevant regulatory requirements and best practices for wildlife management. Our wildlife surveys for ungulates, amphibians, raptors, and songbirds include area assessments and population estimates, habitat evaluation and management planning.

FEATURED PROJECTS



MIGRATORY BIRD SURVEYS AND SPECIES AT RISK MONITORING

Hatfield has extensive experience conducting bird and nest surveys. These surveys are often requested by Alberta Sustainable Resource Development during the early or late periods of the nesting season to ensure that development proponents adhere to the federal Migratory Bird Convention Act and provincial Wildlife Act. Our field personnel can assess a project area and report on bird presence and nesting activities. Hatfield also completes surveys and monitoring programs for species at risk using standardized protocols and methodologies.



WILDLIFE HABITAT MODELING AND MAPPING

Hatfield utilizes GIS software, high-resolution satellite imagery and vegetation maps to support wildlife monitoring and management. Hatfield provided GIS support to provincial wildlife agencies to implement bear deterrent and awareness programs in the Wood Buffalo Region. Raw GPS collar data were downloaded from a number of bears and analyzed along with natural and anthropogenic variables to develop candidate models. These models, and subsequent suitability maps, were used to help identify areas of potential bear habitat use and to study resource selection.



CAPTURE AND HANDLING OF WILDLIFE

Hatfield personnel are experienced in wildlife captures for large and small mammals, including handling, collaring, tagging, collecting biological samples, and releasing mammals of all sizes. Our methods meet the regulatory requirements and animal care protocols of Alberta Sustainable Resource Development. Our staff have expertise providing capture support via aerial animal spotting and coordinating capture logistics. Aerial moose, caribou and deer surveys have also been conducted by Hatfield personnel in the boreal forest.

WWW.HATFIELDGROUP.COM



Hatfield
CONSULTANTS

WHY HATFIELD CONSULTANTS?

Established in 1974 and based in Vancouver, Canada, Hatfield Consultants has built a worldwide reputation in environmental services with over 1,600 projects in Canada, Asia, Africa, South America and Europe. With company offices in Canada, Indonesia, Laos and Botswana, as well as business partners in Chile and Thailand, we are well positioned to respond to your individual project needs and requirements – wherever you are.

We help you apply best environmental practices and contribute to a sustainable future.